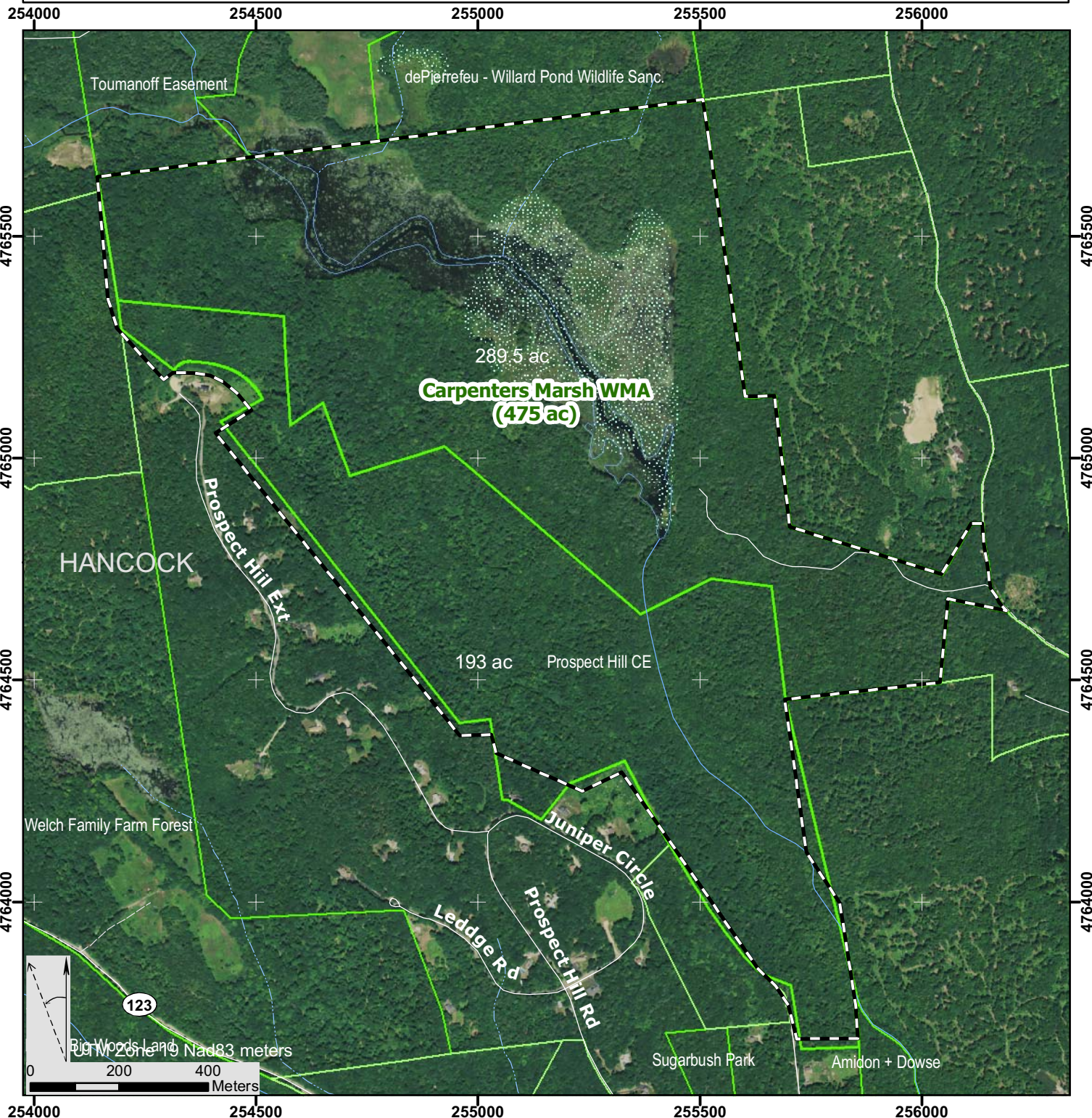




# NH Fish and Game Department Wildlife Management Areas

## Carpenters Marsh WMA (town: Hancock, wmu: H2N)



For further information, please contact:  
 NH Fish and Game Department, Wildlife Division  
 11 Hazen Dr, Concord NH 03301-6500  
 603-271-2461 Email: [wildlife@wildlife.nh.gov](mailto:wildlife@wildlife.nh.gov)

Most data presented on this map represent stock data sets obtained from NH GRANIT, at Complex Systems Research Center, UNH. CSRC, under contract to the NH Office of Energy and Planning (OEP), and in consultation with cooperating agencies, maintains a continuing program to identify and correct errors in these data. OEP, CSRC, NHFGD and the cooperating agencies make no claim as to the validity or reliability or to any implied uses of these data.



- NHFGD Wildlife Management Area approx. boundary, acres (software calculated)
  - Parcel for which NH Fish and Game Dept. or NH Dept of Resources & Economic Dev. is the primary protecting agency.
  - Conservation land (may be restricted access)
  - Stream or Shoreline
  - Wetland
  - Surface Water
  - Road or Street Unmaintained
  - Town Boundary
- 2008 NAIP 1m orthophoto provided by GRANIT