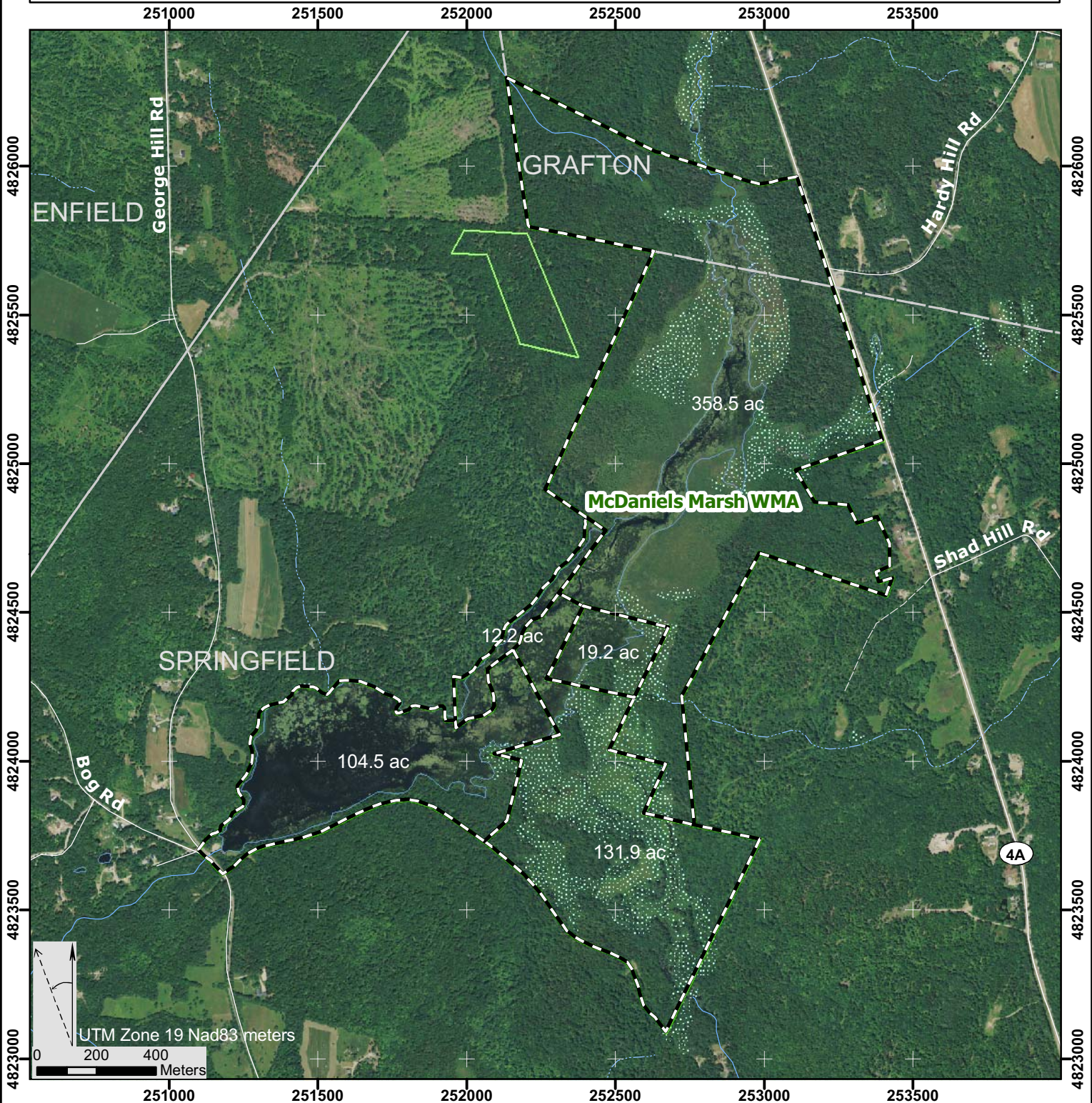




NH Fish and Game Department Wildlife Management Areas

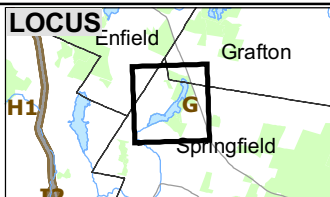
McDaniels Marsh WMA (town: Springfield/Grafton, wmu: G)



Not all conservation land is open to hunting and NHFGD highly recommends that each hunter personally contact landowners whenever possible and seek permission to hunt.

For further information, please contact:
 NH Fish and Game Department, Wildlife Division
 11 Hazen Dr, Concord NH 03301-6500
 603-271-2461 Email: wildlife@wildlife.nh.gov

Most data presented on this map represent stock data sets obtained from NH GRANIT, at Complex Systems Research Center, UNH. CSRC, under contract to the NH Office of Energy and Planning (OEP), and in consultation with cooperating agencies, maintains a continuing program to identify and correct errors in these data. OEP, CSRC, NHFGD and the cooperating agencies make no claim as to the validity or reliability or to any implied uses of these data.



- NHFGD Wildlife Management Area approx. boundary, acres (software calculated)
- Parcel for which NH Fish and Game Dept. or NH Dept of Resources & Economic Dev. is the primary protecting agency.
- Conservation land (may be restricted access)
- 2008 NAIP 1m orthophoto provided by GRANIT
- Stream or Shoreline
- Wetland
- Surface Water
- Road or Street Unmaintained
- Town Boundary